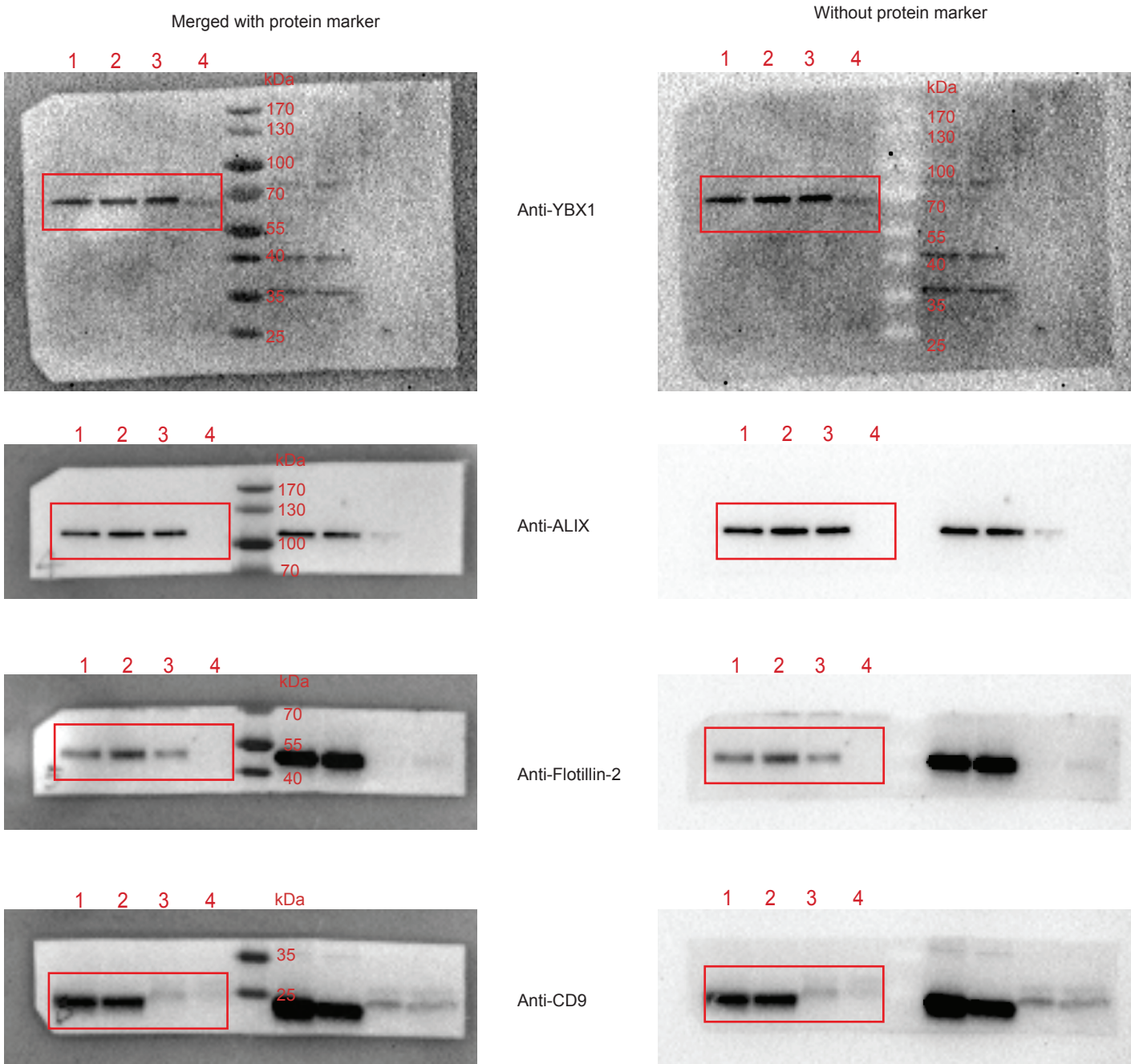


Figure 4E

uncropped blots



Lane 1: untreated,  
Lane 2: treated with TX-100,  
Lane 3: treated with ProK,  
Lane 4: treated with both TX-100 and ProK

Lines 1, 2, 3 and 4 were used in the Figure 4E.

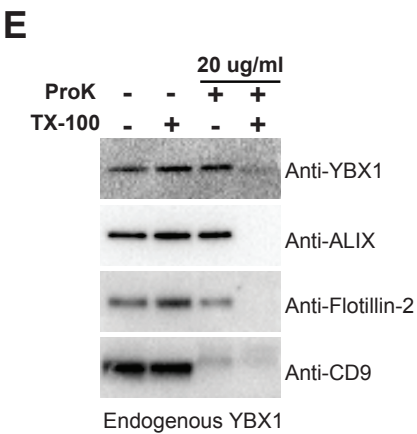


Figure 4E. Proteinase K protection assay on high-speed pellet fractions.